

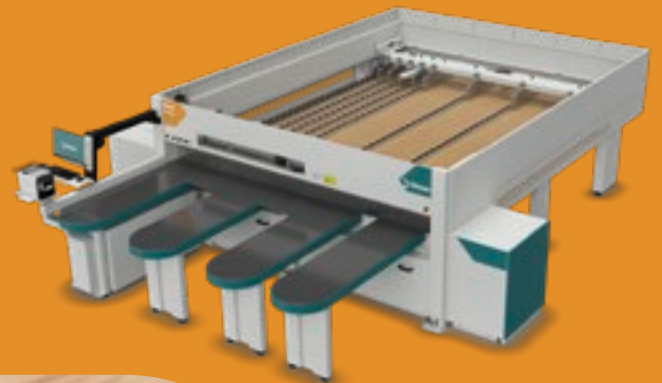


Biesse
Machinery

Wood

Rover Cut Go S F 80

Panel Saw cutting solution



Biesse



06	Overview	20	Ergonomics & Safety
08	Applications	22	Interface & Software
10	Machine Workflow	24	Configurations
12	Operating Units	24	Technical Specifications
14	Worktable	26	Biesse Customer Care
16	Tool Management	28	About us
18	Automation		

Rover

Machines

Stream

Extended Machines

Identify in a few words
the most suitable machine
for your needs from
our product portfolio.

Machining type

Segment

Cut

Cutting

Edge

Edging

Drill

Drilling

Fin

Finishing

Multi

Multi-machining

Pro

Distinctiveness and performance

Up

Agility and expertise

Go

Simplicity and compactness

Find your perfect fit

Panel sizing machine for small craftsmen, designed for daily small-batch production

Combination of compactness and efficiency to serve the operator. Perfectly adaptable for use in confined spaces due to its compact footprint. Its easy configurability allows to meet the specific needs of the operator, providing the ideal balance of precision and flexibility.



Rover

Cut Go S F 80



Optimal use of working area

Working area is designed to use all available space. Cross cuts are done on the square fence side, rip cuts on the opposite. Executing consecutive cuts on opposite sides of the cutting line, always guarantees enough room for the operator to handle panels with ease, without extra-movements.

Zero-time blade changing

Quick blade change is the fastest tool-changing system on the market. Operator can easily change blades with the press of a button and no additional tools.

Sharp blade positioning

Main and scoring blade are driven by two independent motors, with a linear guides system for their movement, granting perfect control on position and ensure cutting quality on each material.

Saw blade carriage concept and side aligner

Compact and balanced structure ensuring max integrity over time, combined with an integrated side aligner to grant perfect panel alignment on square fence.

Productivity increase up to +25%

Twin Pusher 1.2 system enhances machine's productivity and flexibility by efficiently managing different sub-formats with a single cut.

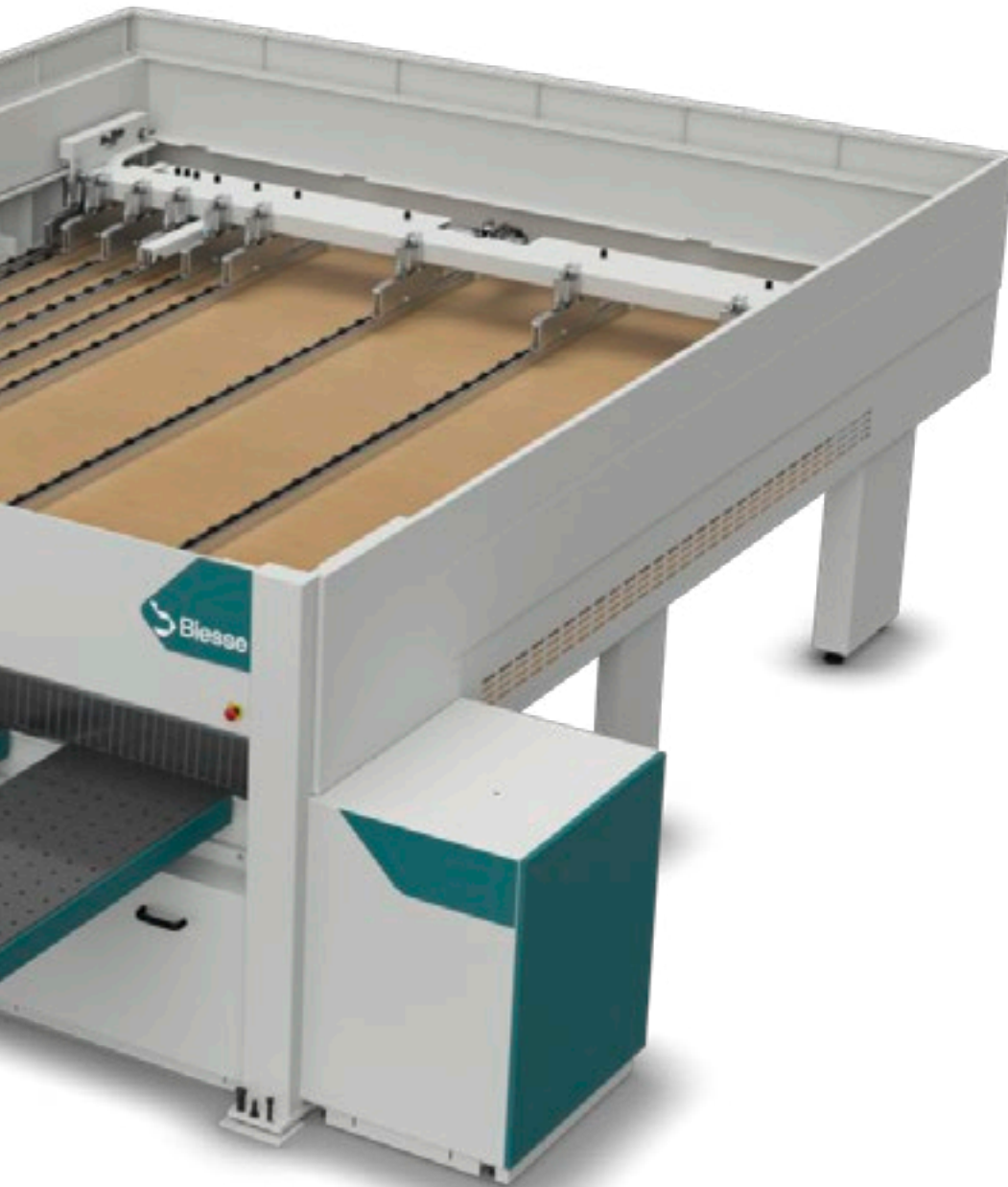
Save on your daily consumption

Up to 80% saving on air consumption thanks to optimized dust extraction and additional power saving with automatic stand-by mode.

Discover
more



biesse.com



Extra storage, no extra footprint

Possibility to use the space underneath the machine as an additional storage for materials and/or cut pieces, without extra footprint needed.

Materials

- MDF MDF
- Ch Chipboard
- PI Plywood
- La Laminated wood
- Me Melamine/HPL panles

Wood

We manufacture wood processing machines for the furniture, window and door and building component industries.





**Home & Office
Furniture**



Kitchen furniture



Retail & Contract



Optimal use of working area

Working area is designed to use all available space. Cross cuts are done on the square fence side, rip cuts on the opposite.

Executing consecutive cuts on opposite sides of the cutting line, always guarantees enough room for the operator to handle panels with ease, without extra-movements.



Thin sheets

Always manageable with front loading. Side aligner on the saw carriage has no trouble also with panels less than 10mm thick.

Panel stack

The machine can process a wide range of wood based materials, including chipboard, MDF, and plywood, in various sizes and thicknesses.



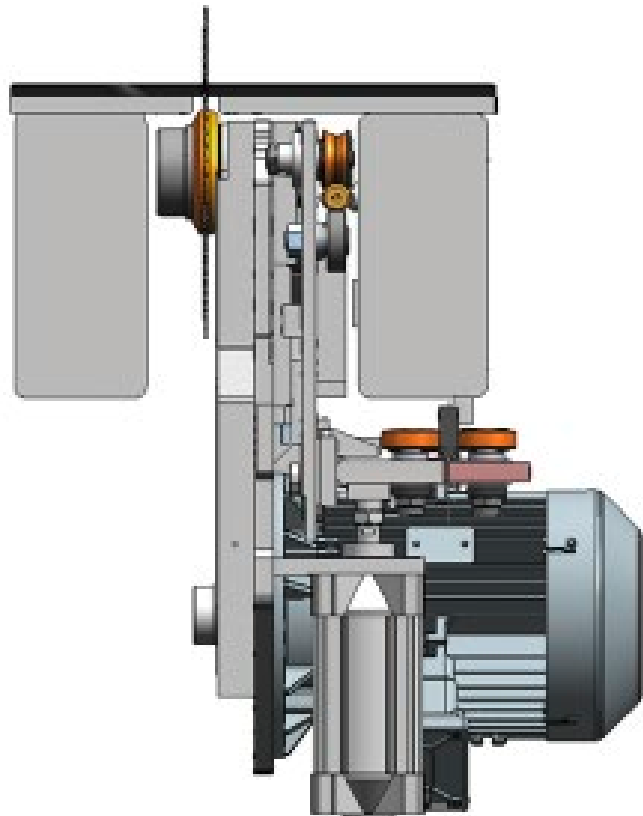


Pusher and grippers

The pusher and gripper system is designed to ensure precise panel positioning and smooth handling throughout the cutting cycle. Advanced components and intelligent design deliver accuracy, reliability, and ease of maintenance.

Saw carriage guide system

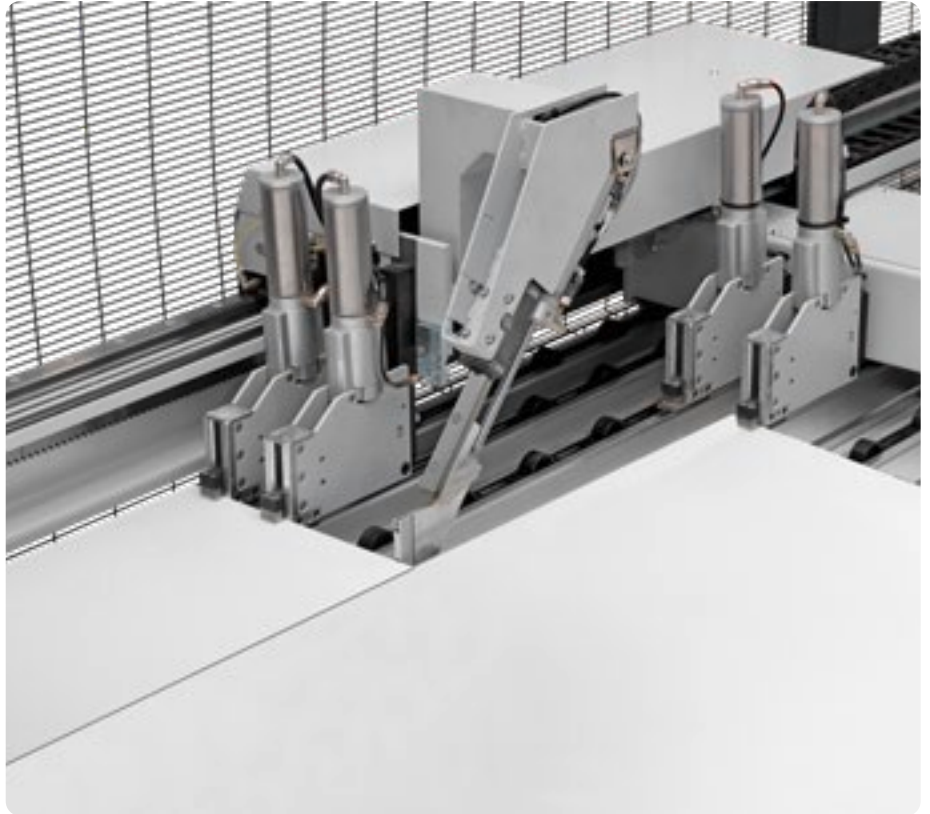
The saw carriage guide system is engineered to deliver exceptional cutting precision and long-term reliability. By combining high-performance mechanics with careful weight distribution, it ensures smooth motion, minimal vibration, and consistent results across demanding production cycles.



Auxiliary pusher

The Twin Pusher 1.2 system is designed to maximize productivity (+25%) and flexibility in cutting operations.

Its patented configuration allows independent handling of strips and panels, enabling efficient cross-cutting and optimized workflow.



Pressure beam

The pressure beam system is designed to guarantee optimal panel stability during cutting operations, ensuring precision and surface protection. Its robust construction and adjustable features make it suitable for a wide range of panel sizes and cutting requirements.



Roller modules on working area

Machine working area is equipped with several roller modules (different quantities for different sizes) offering the perfect panel/stack support during the cutting process. More dense disposition of modules on the cross side in order to accommodate also narrow strips processing without issues. Maximum panel manageable is directly deductible from machine size.



Machine autonomy increased

Integrated lift table ensures higher capability in terms of available material, without losing on compactness (no extra footprint needed). Load a full stack (up to 630mm) to let the machine be always ready to process.



Quick blade change

Quick blade change is the fastest tool-changing system on the market. Operator can easily change blades with the press of a button and no additional tools.



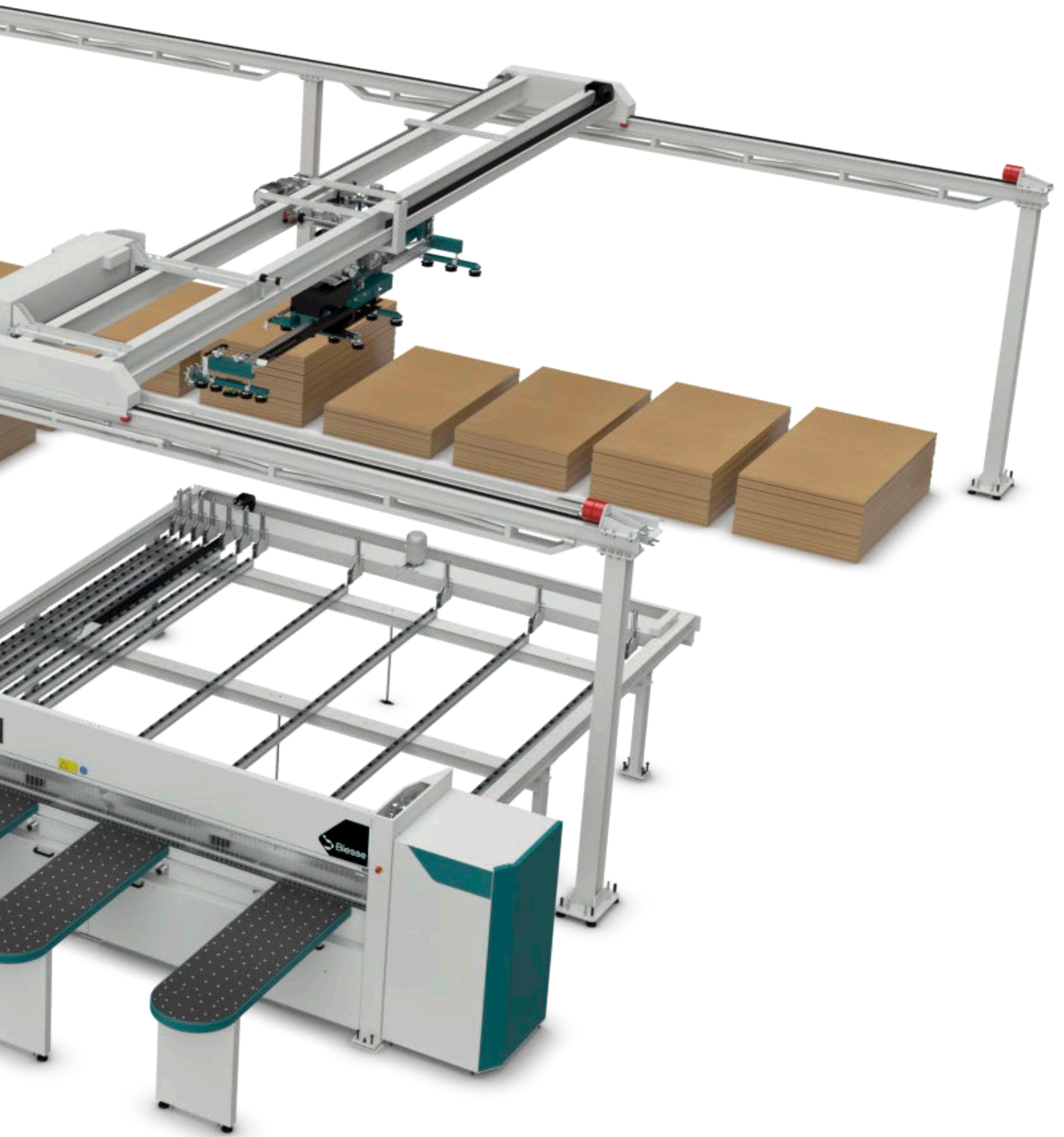




Logic WHM A feeder

Possibility to integrate the machine with an automatic storage system, perfectly combining efficiency and versatility in a single process.

Autonomy in handling various panel sizes and materials, thanks to the automatic loading, and fastest cycle execution with panel always ready to be processed.



Rounded air table for better ergonomics

No sharp edges on air tables, to ensure operator's safety and optimize his ergonomics during cutting



Manual label printing

Possibility to label pieces directly after the cutting process, with the printing station attached to machine.

Extra storage, no extra footprint

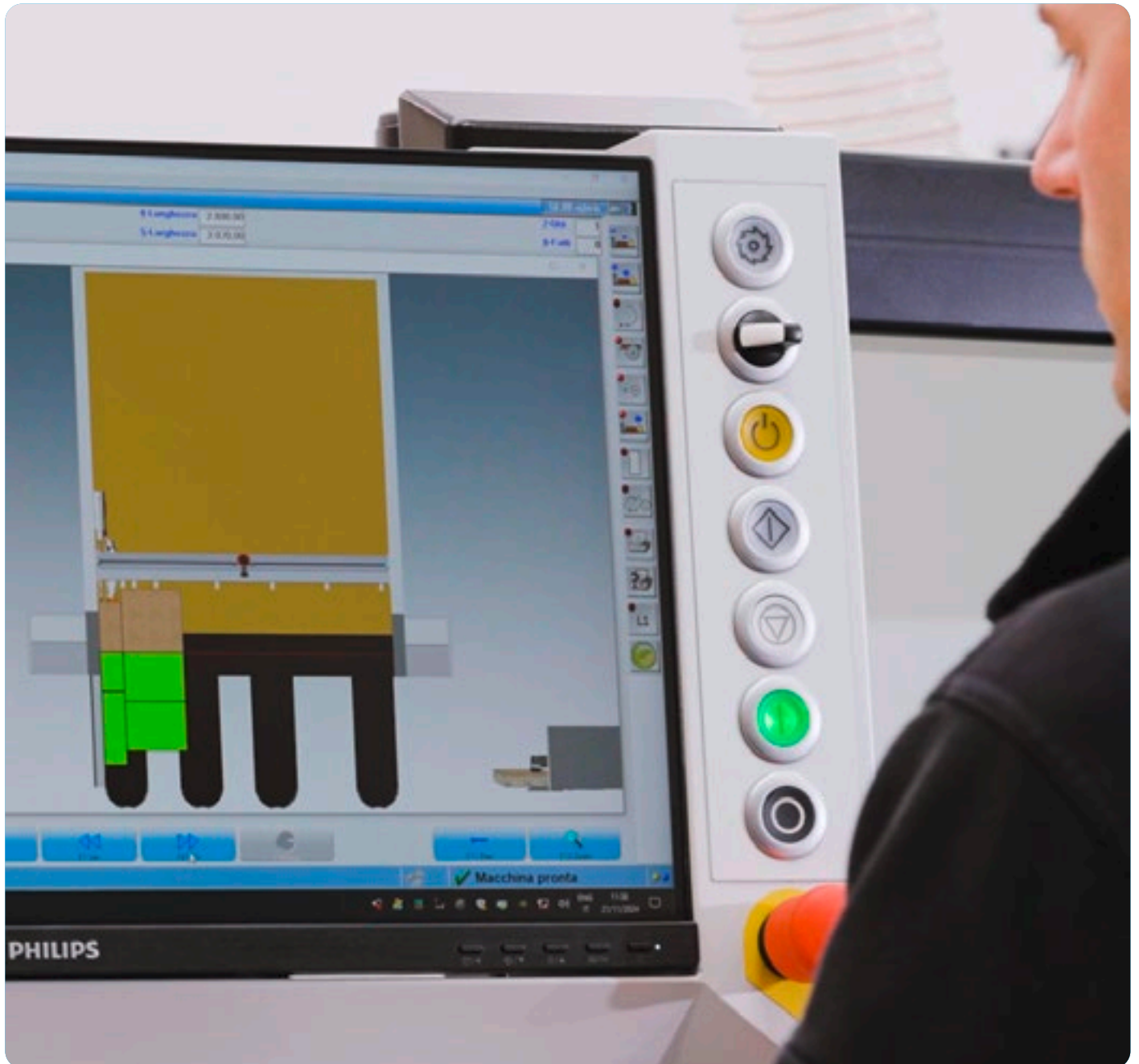
Utilizes the space under the machine without increasing footprint.

Operator LED assistant

Tracking light guides the operator through the cutting cycle. Different colors to indicate different activities are displayed real-time.



Advanced machine interface



OSI Plus version always available. Complex functions and feedbacks from the machine are now at the operator's serve, such as statistic reports, order management and diagnostics for maintenance.

bOpti - Pattern optimizer for Wood Cut machines



Developed by Biesse, automatically creates cutting lists according to the pieces that must be produced with the available panels, minimizing cycle times

and material waste. Operator can set customized parameters to the optimization in order to get the desired result.

Configurations

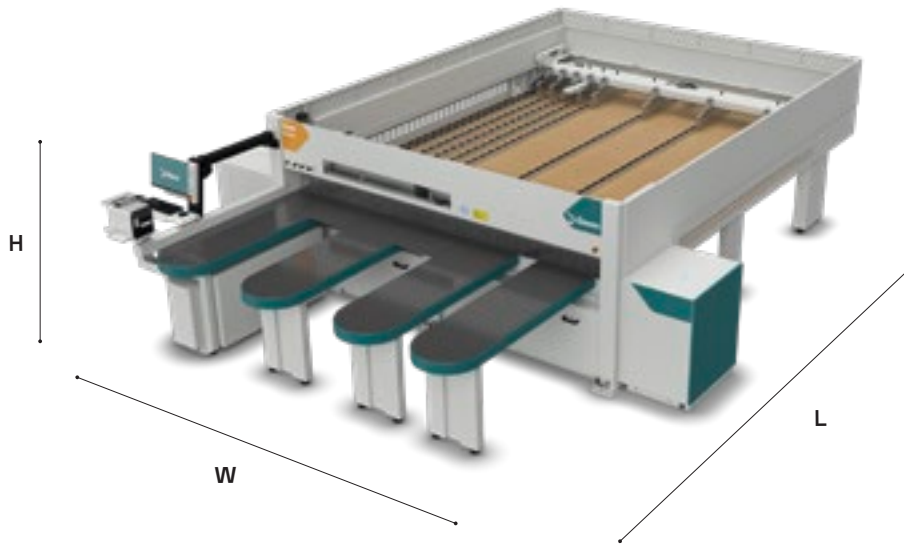


This document includes information about optional features. Scan the QR Code to access the configuration scheme and verify standard and optional equipment.

Technical Specifications

Saw blade projection	[mm] [in]	80 3.15
Cutting length	[mm] [in]	3200 / 3800 / 4500 125.98 / 149.61 / 177.17
Main saw blade motor	[Kw]	7.5 (11 opt.)
Main saw blade diameter	[mm] [in]	350 13.78
Scoring saw blade motor	[Kw]	2.2
Scoring saw blade diameter	[mm] [in]	200 (300 opt.) 7.87 (11.81 in opt.)
Saw carriage motor/drive		Brushless motor Helical toothed rack and pinion
Saw carriage speed	[m/min]	1-100
Pusher carriage motor		Brushless motor
Pusher carriage measuring system		Encoder
Max pusher speed	[m/min]	80 (25 forward)
Alignment stroke	[mm] [in]	300 mm shorter than cutting line 11.81 in shorter than cutting line
Working table height	[mm] [in]	985 38.78
Sizes available	[mm] [in]	3225 / 3232 / 3832 / 3838 / 4545 126.97 / 127.24 / 150.87 / 151.1 / 178.94
Grippers in basic machine	[mm] [in]	5 for 3200 cutting line 5 for 125.98 cutting line
	[mm] [in]	6 for 3800-4500 cutting line 6 for 149.61-177.17 cutting line
Roller modules	[mm] [in]	8 for 3200 cutting line 8 for 125.98 cutting line
	[mm] [in]	9 for 3800 cutting line 9 for 149.61 cutting line
	[mm] [in]	10 for 4500 cutting line 10 for 177.17 cutting line
Scoring adjustment		Manual (DIGISET opt.)
Air table	[mm] [in]	1850 x 600 72.83 x 23.62

The sound pressure levels measured at the operator's position are reported below. The indicated values may vary depending on certain parameters, such as:
 -Type and dimensions of the processed materials -Type of tools used Machine type: Rover Cut Go S F Operating conditions: Cutting Reference standards: **UNI EN ISO 3746, UNI EN ISO 11202**
 and subsequent amendments Measurement uncertainty: **K = 4 dB(A)** - A-weighted surface sound pressure level (L_{pfA}):
83.57 dB(A) - A-weighted sound power level (L_{wA}): **106.14 dB(A)** The indicated noise values are emission levels and do not necessarily represent safe operating exposure levels.
 Although a relationship exists between emission levels and exposure levels, this relationship cannot be reliably used to determine whether additional precautions are required.
 The factors that determine the actual exposure level of the workforce include the duration of exposure, the characteristics of the working environment, and other sources of noise emission, such as the number of machines and adjacent processing operations. In any case, this information allows the machine user to carry out a more accurate assessment of risks and preventive measures.



Front loading machine

		W	L*	H
3200x2500	[mm] [in]	5450 (3250) 214.6 (128.0)	5550 218.5	1830 72.0
3200x3200	[mm] [in]	5450 (3250) 214.6 (128.0)	6250 246.1	1830 72.0
3800x3200	[mm] [in]	6050 (3840) 238.2 (151.2)	6250 246.1	1830 72.0
3800x3800	[mm] [in]	6050 (3840) 238.2 (151.2)	6850 263.3	1830 72.0
4500x4500	[mm] [in]	6750 (4540) 265.7 (178.7)	7550 297.2	1830 72.0

L extends by 310 mm / 12.2 in in case of TP.

*Values in parenthesis refer to the cutting line length

Integrated lift table machine

		W	L*	H
3800x3800 (TE 31x22)	[mm] [in]	6050 (3840) 238.2 (151.2)	6990 275.2	1830 72.0
4500x4500 (TE 38x22)	[mm] [in]	6750 (4540) 265.7 (178.7)	7690 302.8	1830 72.0

L includes space required for rear load photocell (+310 mm / 12.2 in in case of TP).

*Values in parenthesis refer to the cutting line length

Biesse

Customer Care

Beyond machines. Value that works longer.

Biesse Customer Care delivers global expertise and local support, every day, everywhere, to protect your investment and enhance long-term machine performance.





Services

- Installation & Warranty
- Remote assistance
- On-site assistance
- IoT Services



Maintenance

- Machinery maintenance
- Components maintenance



Components

- Spare parts
- Upgrades & Modernization
- Tooling
- Software



Training

- In-person coaching
- Customized education
- Remote training

Founded in Italy in 1969
International natives

We simplify your
manufacturing
to make the process
of any material

Your ing process potential al shine

We are an international company that manufactures lines, machinery and components for making products, enhancing the potential of a wide range of materials.

Thanks to our rooted competence nurtured by an ever-growing worldwide network, we support your business evolution - empowering your imagination.

Master of materials

Join the
Biesse world.

[biesse.com](https://www.biesse.com)





Biesse Material·HUB

Network

Biesse Material Hubs are multi-material spaces designed to experience our company and our complete product portfolio in a unique and engaging way.

A place to explore technologies, share ideas and find the right solution for you.

The world map reflects our identity as 'International Natives', showcasing our global presence through Biesse Material Hubs and showrooms worldwide.



Biesse Material Hub



Showroom



Reserve your visit
in one of our
multi-material
spaces around
the world



Canada | Toronto

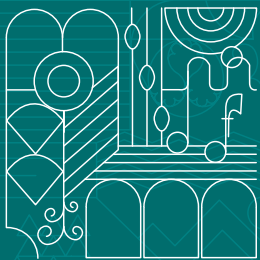


Portugal | Porto

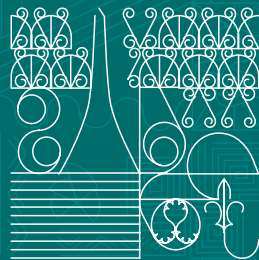
Join the Biesse
Material Hub
experience



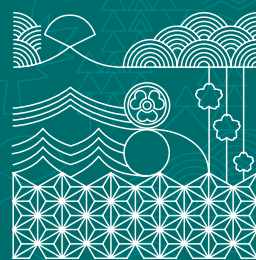
biesse.com



Italy | **Pesaro**



France | **Lyon**



Japan | **Osaka**



Australia | **Sydney**

biesse.com

The technical specifications and drawings are non-binding. Some photos may show machines equipped with optional features. Biesse Spa reserves the right to carry out modifications without prior notice.



biesse.com

